

# Working together...

## How can I help my community?



Think of others, consider your actions and be kind



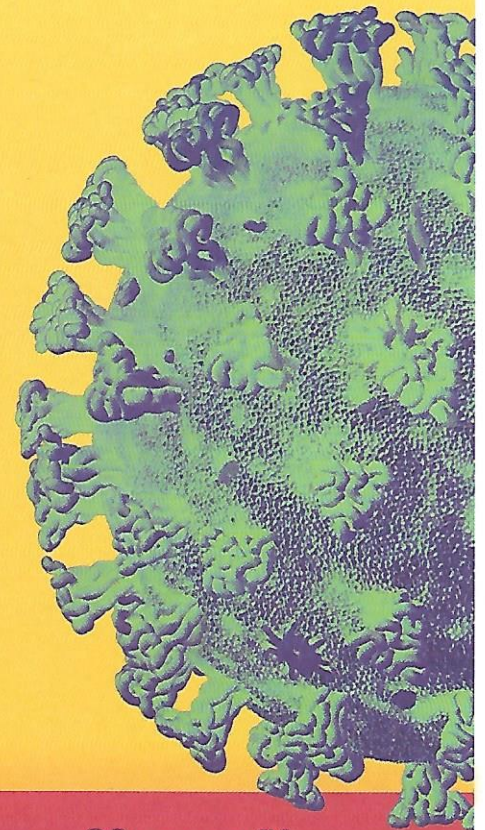
Help and support vulnerable or isolated people



Connect and reach out to your neighbours and community



Share accurate information and advice with others



Any organisation that wishes to offer support can register at [beecan.org](http://beecan.org)



#TogetherEastRiding



PROTECT THE **NHS**

♥ save lives



# Your East Riding...

WHERE EVERYONE MATTERS

#TogetherEastRiding



# Coronavirus

## COVID-19

### If you are vulnerable and in need. We can help...

To support the amazing work community and voluntary organisations are doing to help residents, the council has teamed up with HEY Smile Foundation to set up a helpline for those who are in most need.

#### We are stronger together.

- Do you need assistance in obtaining food?
- Do you have pets that need walking?
- Or maybe you would like to be able to chat with someone.

If you already have friends, family and neighbours who can help you, you should continue with these arrangements. **But if not please get in touch.**

Call **(01482) 393919\*** email [covid@eastriding.gov.uk](mailto:covid@eastriding.gov.uk) or visit [eastriding.gov.uk/covid19](http://eastriding.gov.uk/covid19)

\* (9am-9pm Mon to Fri and 9am-6pm Sat and Sun)